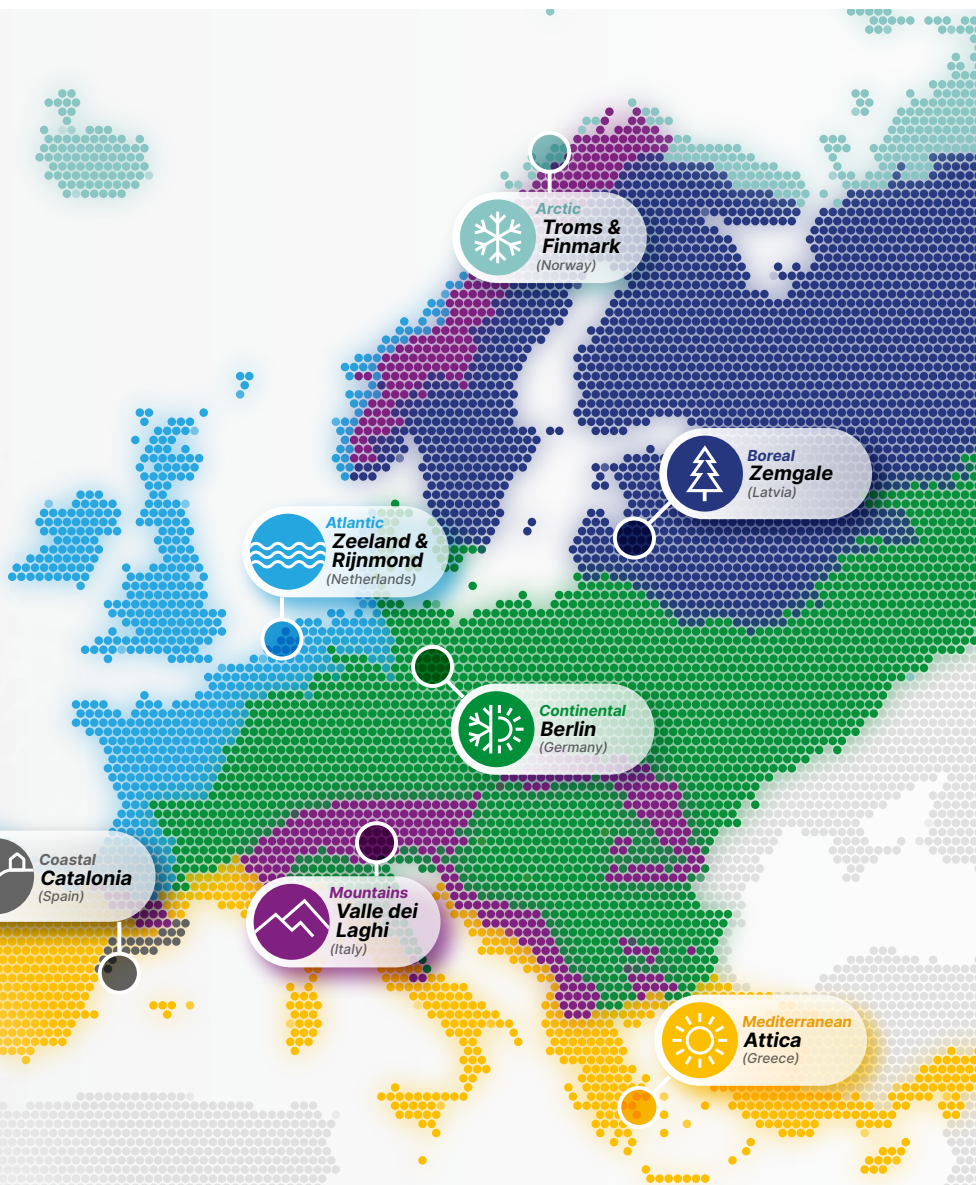


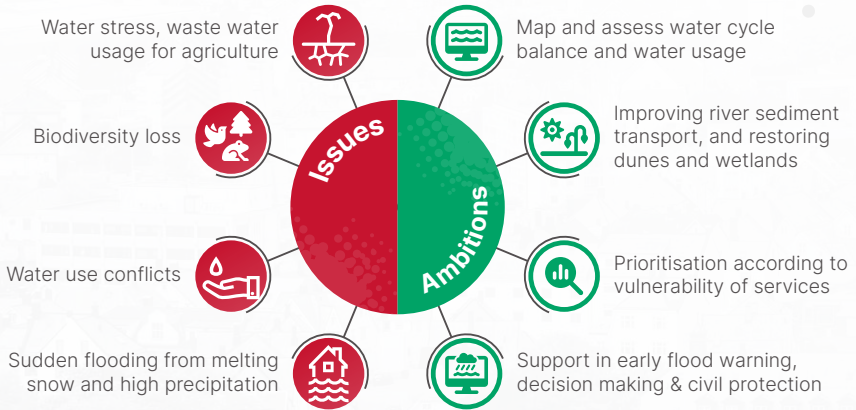


IMPETUS

Turning climate commitments into action



Ambitions and Impact



As a flagship project in the European Union's Green Deal, IMPETUS works closely with three sister projects to amplify the reach and impact of results. Our goals are also aligned with various EU Mission Adaptation 'key community systems' and UN Sustainable Development Goals.

Giving more people an insight or say in how to adapt to climate change is at the heart of IMPETUS, and the wider European strategy we are part of.



By 2050 Europe is the first climate-neutral continent and climate-resilient society.

About the Project

As the seasons become less predictable and the weather more extreme, communities need to adapt to protect people's health, assets and livelihoods. To become more resilient, they need to understand the local impacts of climate change, explore potential solutions, and together create shared knowledge on the best adaptation policies and actions.

Our goal is to help the seven IMPETUS regions find their best pathway to economically sustainable resilience by:

- **testing technologies** and nature-based **solutions** that will mitigate the local impacts of climate change;
- **engaging** with local communities, policy-makers and businesses in co-creation of knowledge, policies and innovative approaches;
- **encouraging 'ownership'** of adaptation measures by local stakeholders;
- **gathering knowledge** about scientific, technical, social and policy developments in local 'Resilience Knowledge Booster' (RKB) hubs;
- **knowledge sharing** at local and regional level centred around RKBs;
- **interconnecting RKBs** with other active communities and organisations to share lessons learned more widely across Europe.

IMPETUS in numbers

93%

of Europeans consider climate change a serious problem

32

IMPETUS partner organisations from 9 countries

30+

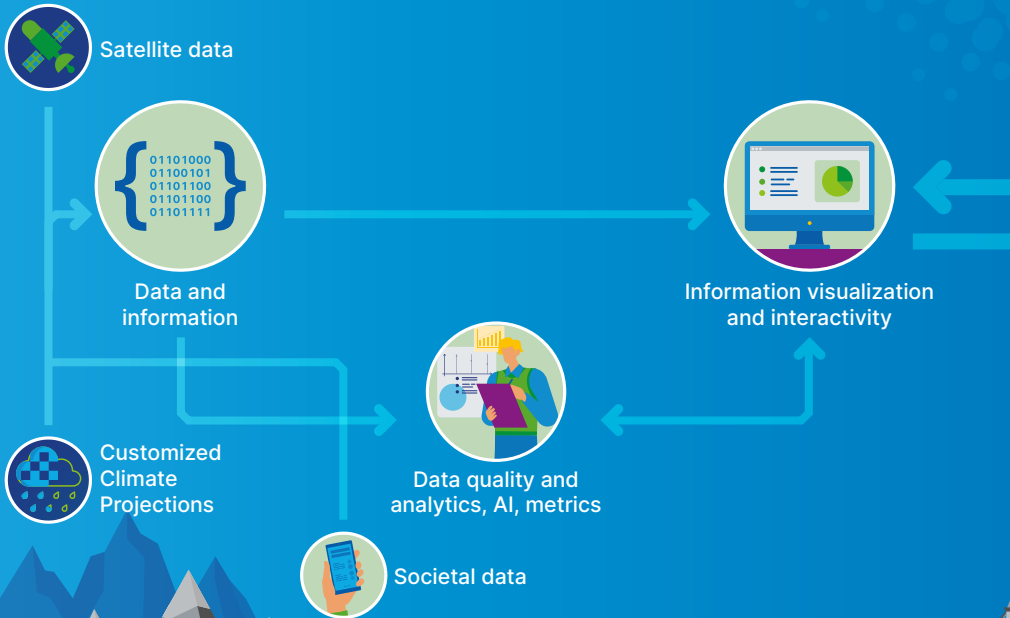
technical and nature-based solutions are being tested

7

demonstrator sites in different European biogeographical regions

14.8M €

project budget, funded by the European Union

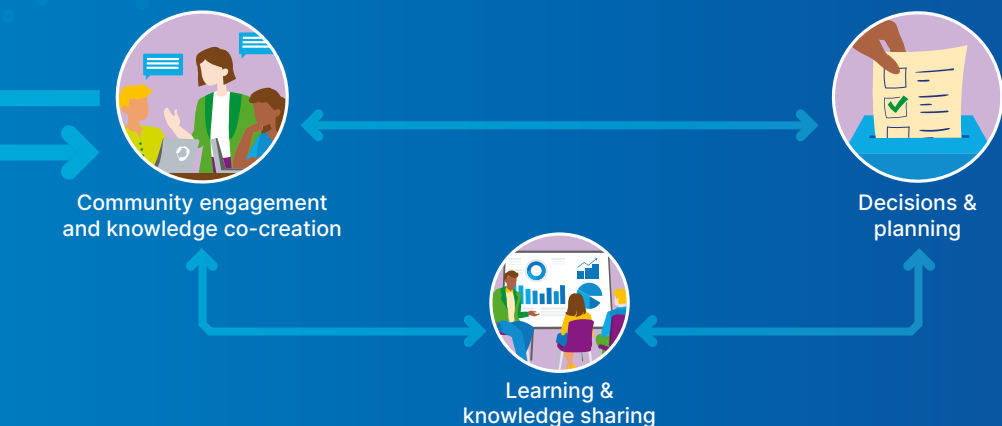


Resilience Knowledge Boosters (RKBs)

To make the best adaptation decisions, we need scientific data about our planet and from society. We need technologies like Artificial Intelligence to analyse and understand it better, and we should easily access and visualise the information through Web-based tools (i.e: maps, Digital Twins).

The IMPETUS Resilience Knowledge Boosters are an innovative approach to combine the voice and experience of local and regional communities with the power of digital tools so that policy-makers, businesses, citizens and other stakeholders can explore climate change evidence together, share information, learn, test ideas and co-create knowledge, discover which actions could constitute the best paths towards climate adaptation, and so contribute to decision making and policies.

knowledge networks



Demonstration sites - get involved!

IMPETUS has demonstration sites in 7 European biogeographical regions (as defined by the European Environment Agency). Here, our multi-disciplinary teams and local stakeholders engage and create together, testing diverse solutions for the local impacts of climate change - addressing water availability and quality, economic issues, and the protection of nature and communities from hazards, among other issues.

In doing so, IMPETUS is providing a network for knowledge flow to other communities at regional and European levels.

Find out more

 climate-impetus.eu

 @ClimateImpetus

 @Climate Impetus



Our Partners



This project has received funding from the European Union's Horizon 2020 research and innovation programme under grant agreement No 101037084.